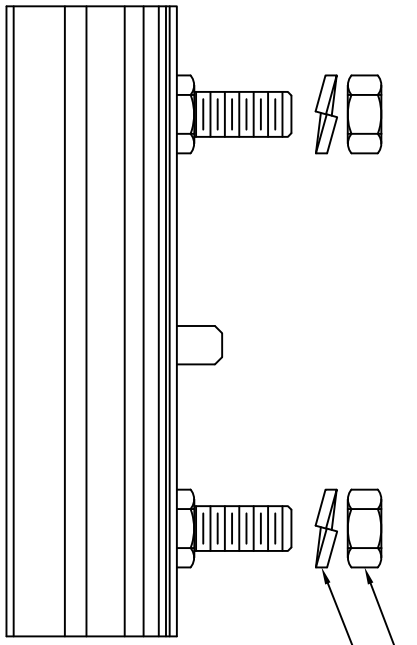
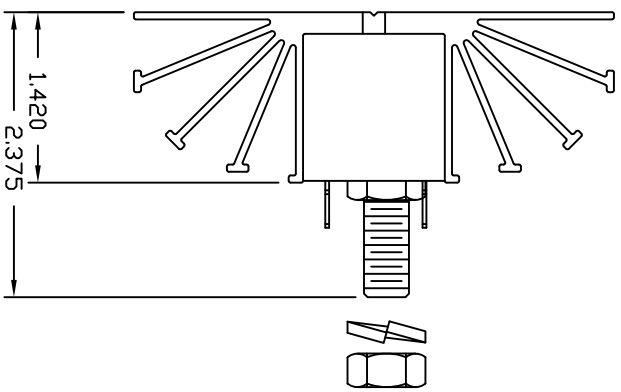
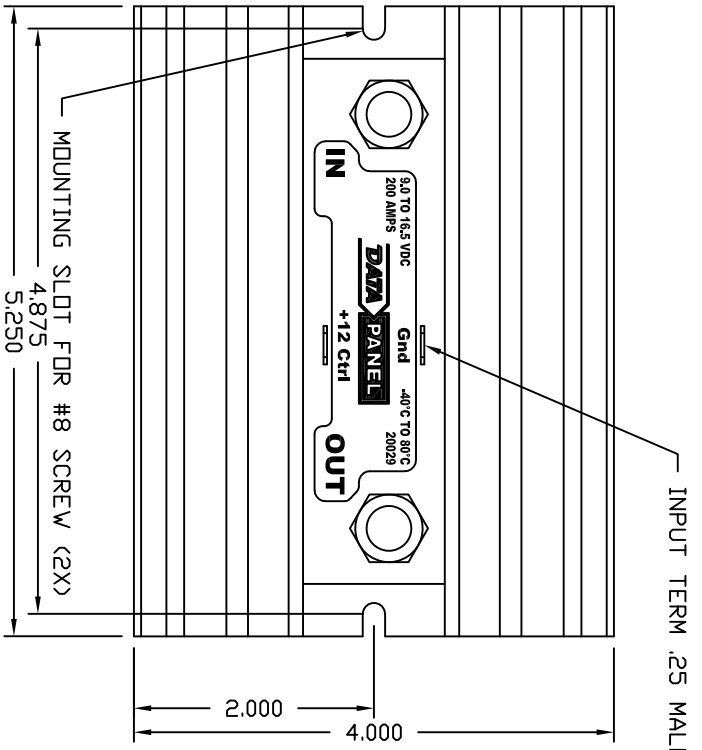


DATE	BY:	DCN	SYM	REVISION RECORD
9/11/03	E	A193	-	ADD TORQUE SPEC
04/15/05	F	A752	-	LABEL NOT ADD
07/26/10	G	C396	-	REVISED NOTES
9/24/01	H	E224	-	UPDATE DWG TO ONE SHEET
JAN 28 20	J	FT171	-	REVISE LABEL SHAPE



3/8-16 HEX NUT 034-11814 (2X)
 3/8 LOCK WASHER 035-11843 (2X)

NOTE:

- UNLESS SPECIFIED OTHERWISE MAX RATING AT 25°C WITH Vdc (BATTERY) = 12.5 Vdc
- MAX CURRENT 200 A
- MAX INRUSH 500 A 1.0 SEC
- MAX VOLTAGE DROP AT 150 A = 0.350 Vdc
- +12 CTRL INPUT
 OFF: OPEN
 ON: 9.0 Vdc MIN
 ON: 16.5 Vdc MAX
 ON: 125 mamp MAX
- CONTROL CIRCUIT REVERSE BATTERY PROTECTION
- INTERNAL DIODE PROTECTION FOR INDUCTIVE LOAD SWITCHING
- SWITCHING TIME AT 150 A
 T (ON) = 50mSec TYP
 T (OFF) = 150mSec TYP
- WEIGHT: 1.5 POUNDS TYP.
- METAL IS ANODIZED BLACK.
- LABEL BACKGROUND IS WHITE.
- LABEL TEXT IS BLACK.
- LABEL LOGO IS BLUE.
- WHEN INSTALLING SWITCH, MAKE GROUND CONNECTIONS FIRST.
- TORQUE CABLE NUTS TO 12 FT/LBS MAX.

DATA PANEL CORP.

CUSTOMER: XXX

MATL: SEE NOTE SIZE: A SCALE: NTS DRAWN BY: KG

FINISH: SEE NOTE TITLE: HIGH CURRENT SWITCH (200 AMP)

DATE: 6/6/00 DRAWING NUMBER: 20029 REV. J

TOLERANCES
 EXCEPT NOTED
 DECIMAL ± .010
 FRACTIONAL ± 1/32
 ANGULAR ± 1°

DATA PANEL CORPORATION CLAIMS ALL PROPRIETARY RIGHTS TO THIS DRAWING AND THE INFORMATION IT CONTAINS. THIS REPRODUCTION, AND MANUFACTURING IS STRICTLY PROHIBITED WITHOUT THE EXPRESS WRITTEN PERMISSION OF DATA PANEL CORPORATION. ALL RIGHTS OF DESIGN OR INVENTION ARE RESERVED.