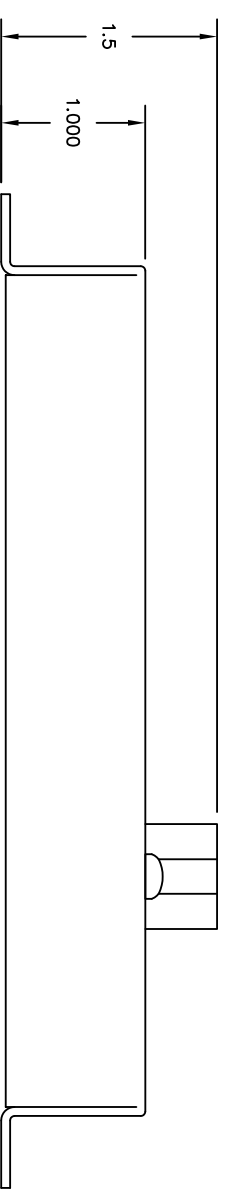
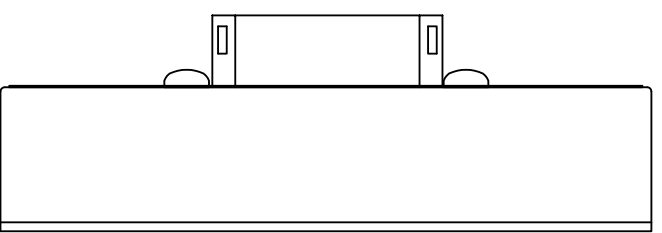
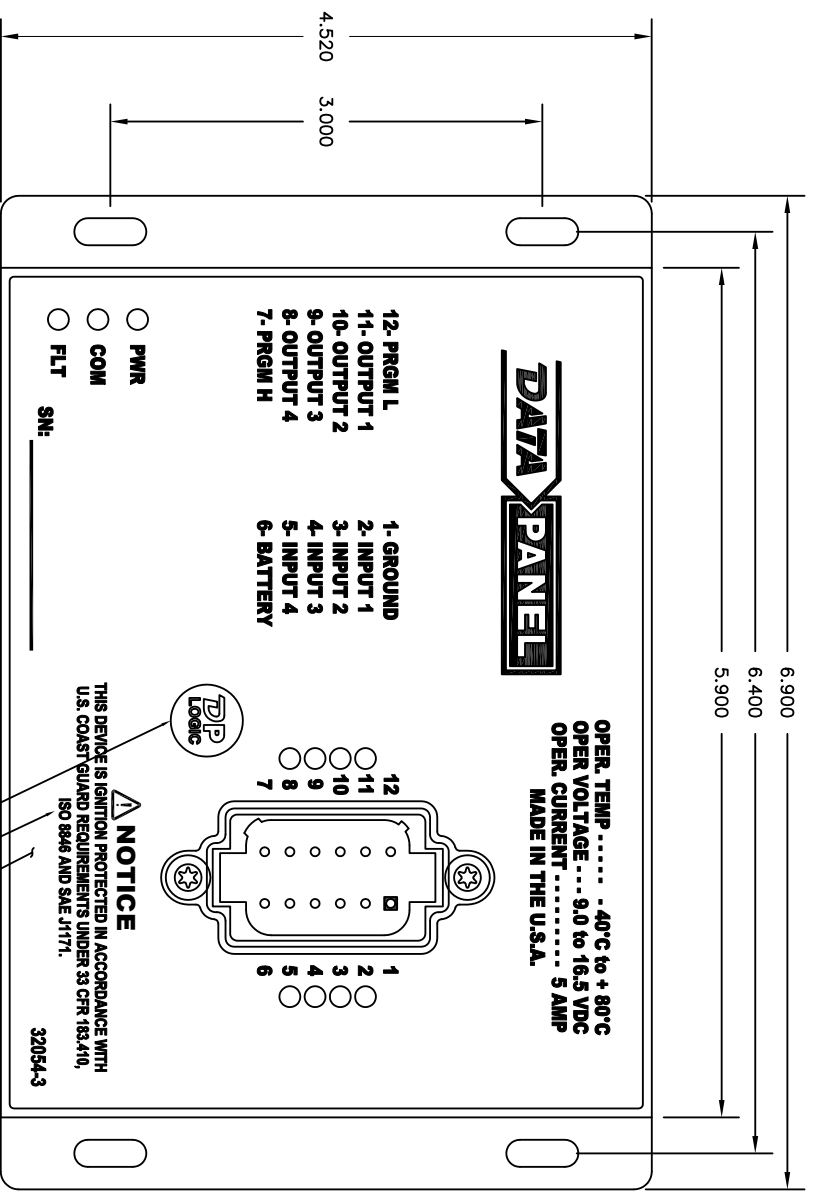


DATE	SYM	REVISION RECORD	BY:	DCN
JUN 26 13	A	RELEASE TO PRODUCTION	SCS	D205



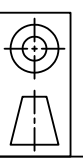
PIN	DESCRIPTION	RATING
1	GROUND, VDC BATTERY RETURN	13 AMP
2	POS DIGITAL INPUT 1	.01 AMP @ +12.5 VDC
3	POS DIGITAL INPUT 2	.01 AMP @ +12.5 VDC
4	POS DIGITAL INPUT 3	.01 AMP @ +12.5 VDC
5	POS DIGITAL INPUT 4	.01 AMP @ +12.5 VDC
6	+12VDC BATTERY	13 AMP @ +12.5 VDC
7	PRGM COM H	NC
8	DIGITAL OUTPUT 4	5 AMP @ +12.5 VDC
9	DIGITAL OUTPUT 3	5 AMP @ +12.5 VDC
10	DIGITAL OUTPUT 2	5 AMP @ +12.5 VDC
11	DIGITAL OUTPUT 1	5 AMP @ +12.5 VDC
12	PRGM COM L	NC

# DATA PANEL CORP.

CUSTOMER: X			
MATL: SEE NOTE	SIZE: A	SCALE: NTS	DRAWN BY: SCS
FINISH: SEE NOTE		APP. BY:	

TITLE: VDM-0404		DATE: APR 12 13	DRAWING NUMBER: 32054-3	REV.:
				A

- NOTE:
- SEE 32054-102 FOR ASSEMBLY INSTRUCTIONS.
  - DEUTSCH CONNECTOR DT15-12PA (134-1300-01612) MATES WITH DT06-12SA (134-1000-01612)
  - USE DEUTSCH SEALING PLUG 114017 (134-9997-07000) ON ALL UNUSED PINS



DATA PANEL CORPORATION CLAIMS ALL PROPRIETARY RIGHTS TO THIS DRAWING AND THE INFORMATION IT CONTAINS. THIS MATERIAL IS CONFIDENTIAL. DISCLOSURE, REPRODUCTION, AND MANUFACTURING IS STRICTLY PROHIBITED WITHOUT THE EXPRESS WRITTEN PERMISSION OF DATA PANEL CORPORATION. ALL RIGHTS OF DESIGN OR INVENTION ARE RESERVED.

TOLERANCES	EXCEPT WHERE NOTED
DECIMAL	± .010
FRACTIONAL	± 1/32
ANGULAR	± 1°